

This design could be placed in a corner of your yard where it has light shade to full sun and average soil moisture. It has a variety of heights and will provide multiple colors throughout the growing season and attract many butterflies.

The mud pan provides a place for moths and butterflies to get necessary water and minerals.

Small birds will also enjoy the seeds of many of the flowers, and hummingbirds will come to the Wild Columbine.

PLANT LIST

AC	6	<i>Aquilegia canadensis</i>	Columbine	Red/Yellow	May-Jul	2-3'	LH, B	Native
AI	5	<i>Asclepias incarnata</i>	Swamp milkweed	Pink	Jul-Aug	3-4'	LH, N	Native
CL	8	<i>Coreopsis lanceolata</i>	Sand coreopsis	Yellow	Jun-Aug	12-24"	B, LB	Native
EM	5	<i>Eupatorium maculatum</i>	Spotted Joe-Pye Weed	Pink	Jul-Aug	4-5'	N	Native
FV	38	<i>Fragaria virginiana</i>	Wild strawberry	White	Apr-May	6"		Native
HH	5	<i>Heliopsis helianthoides</i>	False sunflower	Yellow	Jul-Sep	4-6'		Native
LS	8	<i>Liatris spicata</i> 'Kobold'	Marsh Blazing Star	Pink	Jul-Aug	3-4'	N	Native
LO	6	<i>Lobelia siphilitica</i>	Blue lobelia	Blue	Jul-Sep	1-3'	PP	Native
TO	5	<i>Tradescantia ohiensis</i>	Spiderwort	Blue	May-Jul	2-3'	PP, N	Native
VM	6	<i>Vernonia missurica</i>	Ironweed	Purple	Aug-Sep	4-6'	N	Native
ZI	6	<i>Zinnia elegans</i>	Zinnia	Multiple	Aug-Sep	3'	N	Non-native

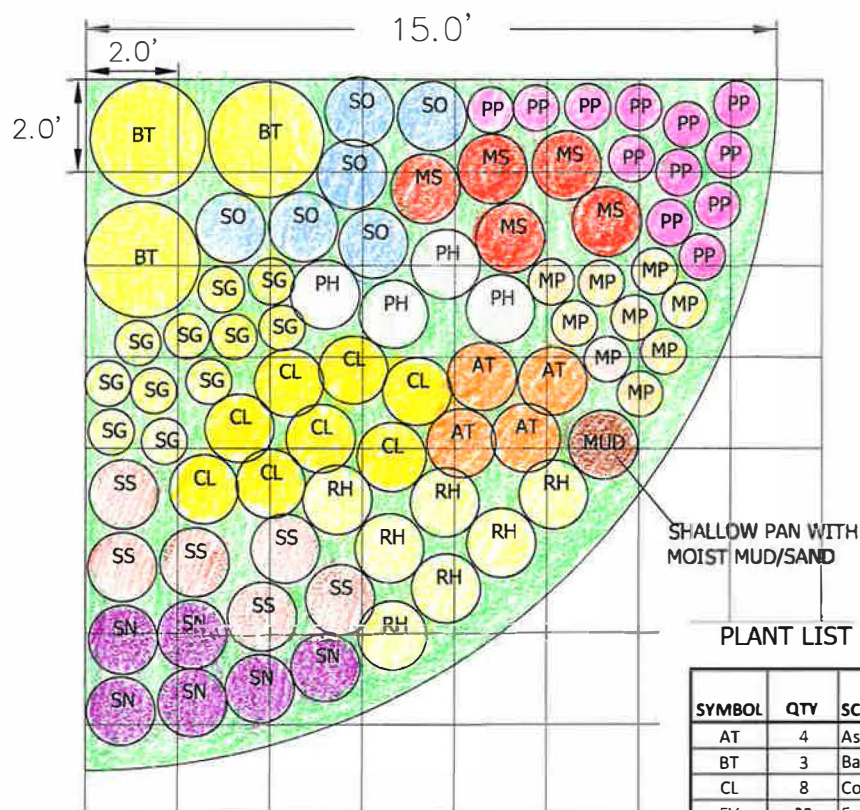
LH: Larval host for certain butterfly species
N: Provides nectar for butterflies

PROJECT: BUTTERFLY GARDENS
SOIL MOISTURE: AVERAGE
SUNLIGHT: FULL SUN



SCALE: 1" = 4'





This garden can be placed in a corner of your yard where it has full sun and dry soils. It's mix of grasses, perennials and annuals has a variety of heights and colors throughout the growing season and will attract many butterflies.

The mud pan provides a place for moths and butterflies to get necessary water and minerals.

Small birds will also enjoy the seeds of many of the flowers. You can eat the small wild strawberries, which should be placed throughout the garden as a natural, flowering groundcover.

SYMBOL	QTY	SCIENTIFIC NAME	COMMON NAME	COLOR	BLOOM PERIOD	HEIGHT	USE	NOTES
AT	4	<i>Asclepias tuberosa</i>	Butterfly milkweed	Orange	Jun-Jul	1-2'	LH, N	Native
BT	3	<i>Baptisia tinctoria</i>	Wild indigo	Yellow	Jun-Aug	2-3'	LH	Native
CL	8	<i>Coreopsis lanceolata</i>	Sand coreopsis	Yellow	Jun-Aug	12-24"	B	Native
FV	38	<i>Fragaria virginiana</i>	Wild strawberry	White	Apr-May	6"		Native
MP	9	<i>Monarda punctata</i>	Horsemint	Yellow	Jul-Sep	1-3'	N	Native
PH	4	<i>Penstemon hirsutus</i>	Hairy beardtongue	White	May-Jul	12-24"	B	Native
PP	12	<i>Phlox pilosa</i>	Prairie phlox	Pink	May-Jul	24"	N	Native
RH	7	<i>Rudbeckia hirta</i>	Black-eyed Susan	Yellow	Jun-Sep	1-3'	LH, N	Native
SS	6	<i>Schizachyrium scoparium</i>	Little bluestem	Green	Aug	2-4'	LH	Native
SG	11	<i>Solidago speciosa</i>	Showy goldenrod	Yellow	Aug-Oct	2-5'	N, PP	Native
SO	6	<i>Symphotrichum oolentangiense</i>	Skyblue Aster	Blue	Aug-Sep	2-3'	N	Native
SN	6	<i>Salvia nemorosa</i>	Meadow Sage	Blue, purple	May-Jul	1-2'	N	Non-native
MS	5	<i>Tithonia diversifolia/rotundifolia</i>	Mexican sunflower	Orange	Jul-Sep	4-6'	N	Non-native, annual

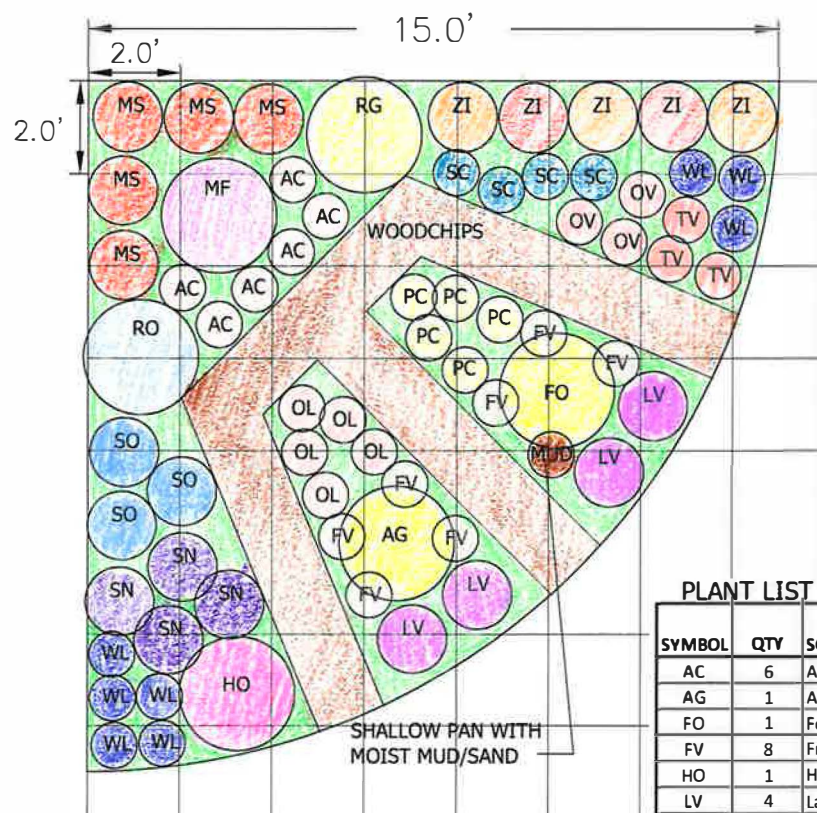
B: Birds eat the seeds
LH: Larval host for certain butterfly species
N: Provides nectar for butterflies
PP: Attracts pollinators or predatory insects

PROJECT: BUTTERFLY GARDENS
SOIL MOISTURE: DRY
SUNLIGHT: FULL SUN



SCALE: 1" = 4'





This flavorful garden can be placed in a corner of your yard where it has full sun and dry soils. You can share your space with butterflies who enjoy the herbs' flowers, and occasionally the leaves, of these popular herbs.

The mud pan provides a place for moths and butterflies to get necessary water and minerals.

The dill, fennel and parsley greenery is food for Black Swallowtail caterpillars and the Mexican Sunflowers and Zinnias will provide a strong dash of color and nectar to attract butterflies to your yard.

PLANT LIST

SYMBOL	QTY	SCIENTIFIC NAME	COMMON NAME	COLOR	BLOOM PERIOD	HEIGHT	USE	NOTES
AC	6	Allium cernuum	Nodding wild onion	Pink	Jul-Aug	12"-18"		Native
AG	1	Anethum graveoleus	Dill	Yellow	Jul-Aug	2-3'	N, LH	Non-native
FO	1	Foeniculum vulgare	Fennel - green	Yellow	Jul-Aug	3-5'	N, LH	Non-native
FV	8	Fragaria virginiana	Wild strawberry	White	Apr-May	6"		Native
HO	1	Hysopus officinalis	Hyssop	Pink	Jul-Sep	2-3'	N	Non-native
LV	4	Lavandula angustifolia 'Hidcote'	Hidcote lavender	Purple	Summer	12"-18"	N	Non-native
MF	1	Monarda fistulosa	Wild bergamot	Lavender	Jul-Aug	2-4'	N	Native
WL	7	Nepeta 'Walker's Low Junior'	Walker's Low catmint	Purple	Late spr-sum	18-24"	N	Non-native
OL	5	Origanum laevigatum 'Herrenhaus'	Oregano	Pink	Jun-Sep	6-9"	N	Non-native
OV	3	Origanum majorana	Sweet marjoram	Pink	May-Sep	9-12"	N	Non-native
PC	5	Petroselinum crispum	Parsley	Green-Yellow	Summer	9-12"	LH	Non-native
RO	1	Rosmarinus officinalis	Rosemary	Pale blue-wh	Jun-Jul	2-6'	N	Non-native
RG	1	Ruta graveolens	Rue	Yellow	Jun-Aug	2-4'	LH	Non-native
SN	4	Salvia nemorosa	Meadow Sage	Blue, purple	May-Jul	1-2'	N	Non-native
SO	3	Salvia officinalis	Sage	Lt blue	June	12-30"	N	Non-native
SH	3	Satureja hortensis	Savory	White/lavend	Jul-Sep	12-18"	N	Non-native
SC	4	Scabiosa sp.	Pincushion Flower	Blue	May-Sep	12-18"	N	Non-native
TV	3	Thymus vulgaris	Thyme	Pink	Jun-Aug	6-12"	N	Non-native
MS	5	Tithonia diversifolia/rotundifolia	Mexican sunflower	Orange	Jul-Sep	4-6'	N	Non-native, annual
ZE	5	Zinnia elegans	Zinnia	Multiple	Aug-Sep	3'	N	Non-native

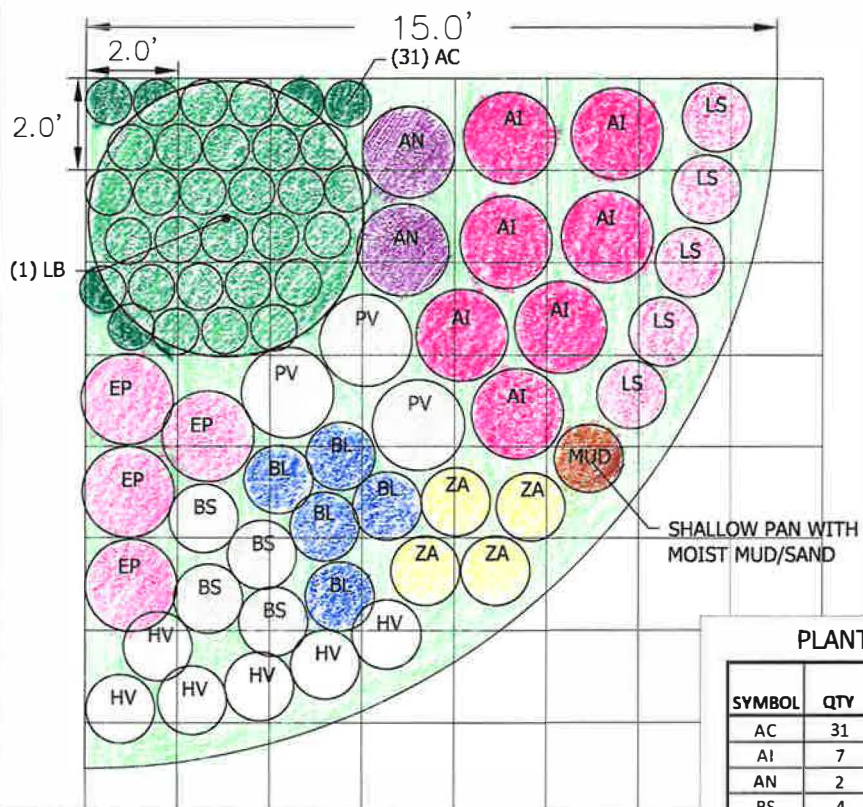
LH: Larval host for certain butterfly species
N: Provides nectar for butterflies

PROJECT: BUTTERFLY GARDENS
SOIL MOISTURE: DRY
SUNLIGHT: FULL SUN



SCALE: 1" = 4'





This design could be placed in a corner of your yard where it has light shade to full sun and consistent soil moisture (but not standing water). It will provide color throughout the growing season and attract many butterflies.

The mud pan provides a place for moths and butterflies to get necessary water and minerals.

The spicebush provides shade and is a larval host for the Spicebush Swallowtail butterfly. The bush may reach 8-10 feet in height.

PLANT LIST

SYMBOL	QTY	SCIENTIFIC NAME	COMMON NAME	COLOR	BLOOM PERIOD	HEIGHT	USE	NOTES
AC	31	<i>Asarum canadense</i>	Wild ginger	Brown	May	6-9"	Cover	Native
AI	7	<i>Asclepias incarnata</i>	Swamp milkweed	Pink	Jul-Aug	3-4'	LH, N	Native
AN	2	<i>Aster novae-angliae</i>	New England Aster	Purple	Aug-Sep	3-6'	LH	Native
BS	4	<i>Eupatorium perfoliatum</i>	Boneset	White	Jul-Sep	4-6'	N	Native
EP	4	<i>Eupatorium purpureum</i>	Joe-Pye Weed	Pink	Jul-Sep	4-6'	N	Native
HV	6	<i>Hydrophyllum virginianum</i>	Virginia waterleaf	White	May-Jun	1-3'	PP	Native
LS	5	<i>Liatris spicata</i>	Marsh Blazing Star	Pink	Jul-Aug	3-4'	N	Native
BL	5	<i>Lobelia siphilitica</i>	Blue lobelia	Blue	Jul-Sep	1-3'	PP	Native
PV	3	<i>Pycnanthemum virginianum</i>	Mountain mint	White	Jul-Sep	2-4'	N	Native
ZA	4	<i>Zizia aurea</i>	Golden Alexander	Yellow	May-Jun	2-3'	N	Native
LB	1	<i>Lindera benzoin</i>	Spicebush	Yellow	Apr-May	8-10'	LH	Native

LH: Larval host for certain butterfly species
N: Provides nectar for butterflies

PROJECT: BUTTERFLY GARDENS
SOIL MOISTURE: MOIST
SUNLIGHT: PARTLY SUNNY



SCALE: 1" = 4'

